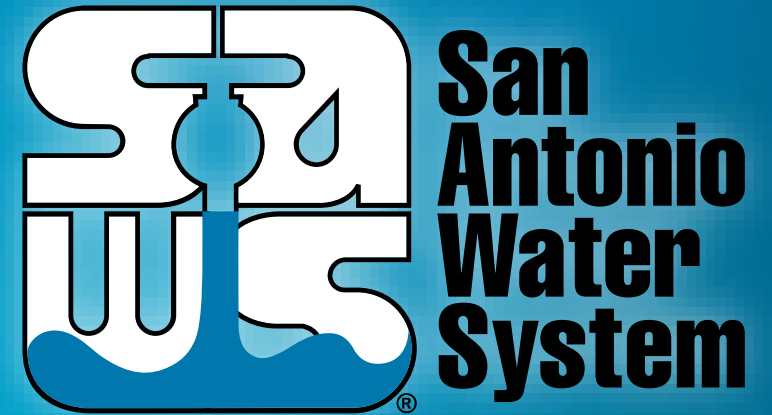


CIAC Follow Up Information

Tracey B. Lehmann, P.E.
Director of Development



MAKING SAN ANTONIO
WATERFUL

Capital Improvements Advisory Committee
August 22, 2018

Follow Up Items

- EPA Consent Decree
 - Report on Condition of SAWS Sewer Infrastructure
 - Break down of CIP portion of Consent Decree budget.
- LUAP Projections
 - Comparison with Other Agencies
 - Clarification on Population Distribution
- CIAC's Findings From 2014

EPA Consent Decree

SAWS: EPA
www.saws.org/infrastructure/EPA/download.cfm

Aquifer Level 643.9 | Stage 2: Water On Your Day PAY YOUR BILL ONLINE

San Antonio Water System

Restriction Details | Report Water Waste

Who We Are | Your Water | Conservation | Service | Infrastructure | Education | Environment | Jobs | Business Center

INFRASTRUCTURE

HOME > INFRASTRUCTURE > EPA > DOWNLOAD

INFRASTRUCTURE
Main
SAWS Infrastructure Overview
Capital Improvement Program
EPA
Work to be Performed
Download Documents

LIKE US ON facebook
FOLLOW US ON twitter

Download Documents

Download EPA Consent Decree-related documents in Adobe Acrobat format by clicking on the titles below.

- Full Consent Decree Document - 162 pages - 4 MB
- Printable Fact Sheet - 2 page - 2 MB
- Wastewater Treatment Plant Effluent Violation Corrective Actions Report - 23 pages - 1.2 MB
- Sewer Reporting and Documentation Procedures Compliance Letter - 2 pages - 1 MB
- Sewer Overflow Response Plan (SORP) - Revision 1 - 95 pages - 4.8 MB
- Water Quality Program Plan - 17 pages - 1.6 MB
- Capacity, Management, Operation & Maintenance (CMOM) Program - Revision 1 - 496 pages - 22 MB
- Water Quality Program Report - Oct. 13, 2015 - 354 pages - 141 MB
- Phase II Early Action Program - Revision 1 - Oct. 27, 2015 - 37 pages - 7.1 MB

Annual Reports

- 2016 Sewer Management Program Annual Report - 112 pages - 12 MB

QUICK LINKS
Southwest Pipeline
Grease Management
Do-It-Yourself
How You Can Help

- Oct. 13, 2015 - 14 pages - 6.2 MB

Condition and Capacity Assessment Reports

- Condition Assessment Report - 28 pages - 24.4 MB
- Capacity Assessment Report - 30 pages - 7 MB

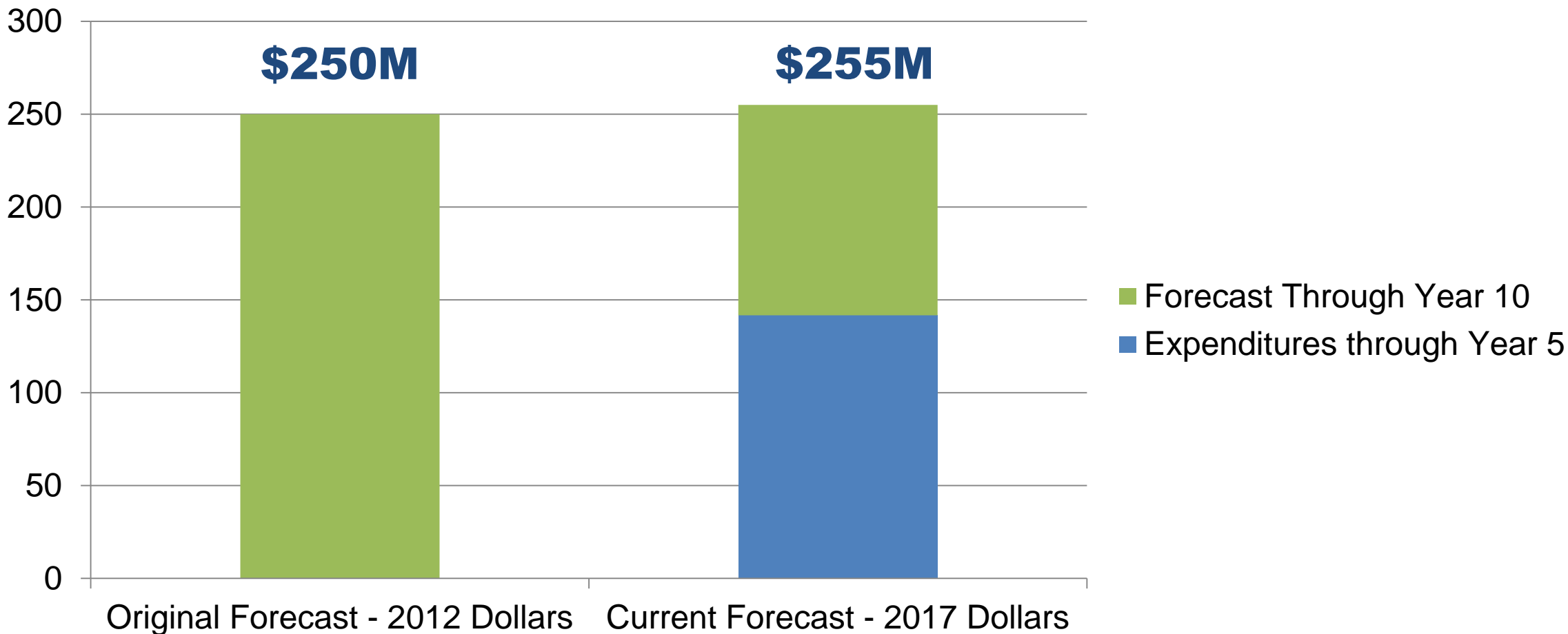
Monthly Compliance Reports

- July 2018 - 45 pages - 5 MB

- <http://www.saws.org/infrastructure/EPA/download.cfm>

Total Consent Decree O&M Cost

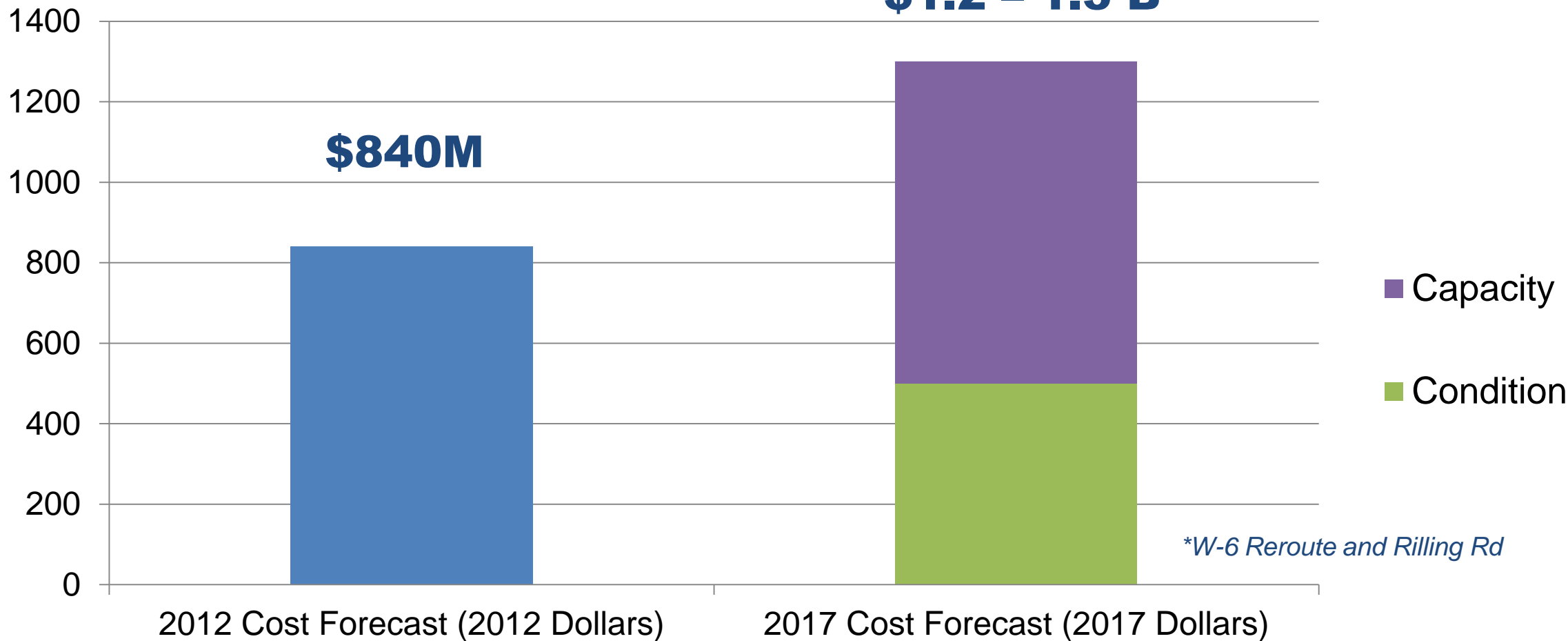
Original Forecast vs. Current Forecast



Preliminary Consent Decree CIP Costs

Original Forecast vs. Current Forecast

\$1.2 – 1.3 B



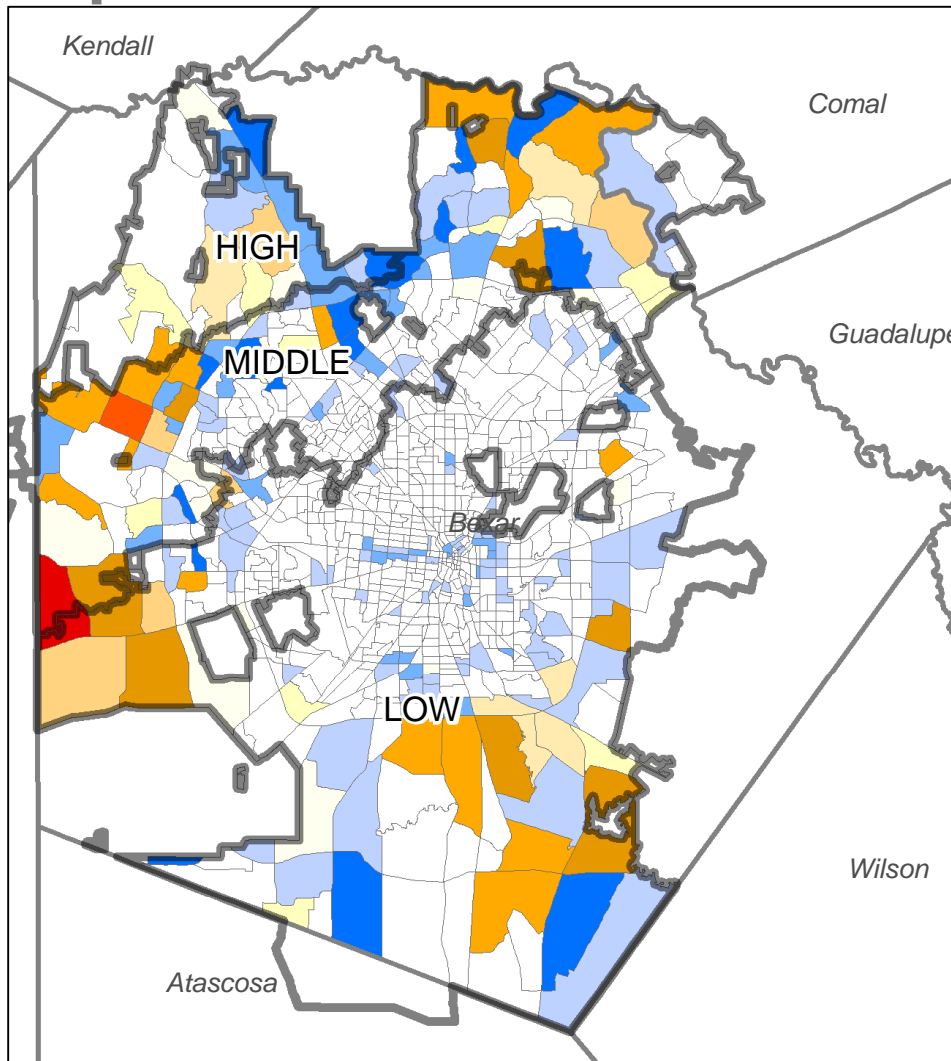
2014 COSA Adopted Population Projections

Population Projection Development

- Developed by AACOG/MPO finalized in 2014
- Participants included COSA, SAWS, CPS, Bexar County, VIA, and others
- COSA, SAWS and AACOG/MPO are utilizing.
- AACOG/MPO are currently reviewing for updates

2019-2028 Change in Population, Water Service Area

- Map shows the change in population from 2019 to 2028

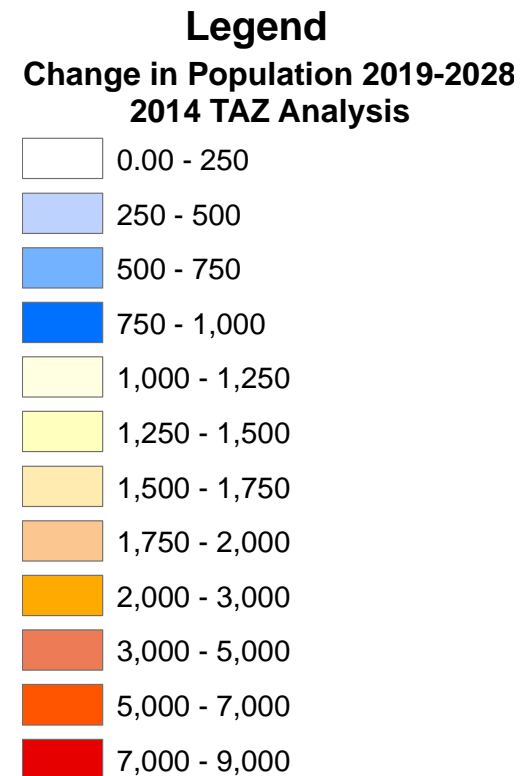
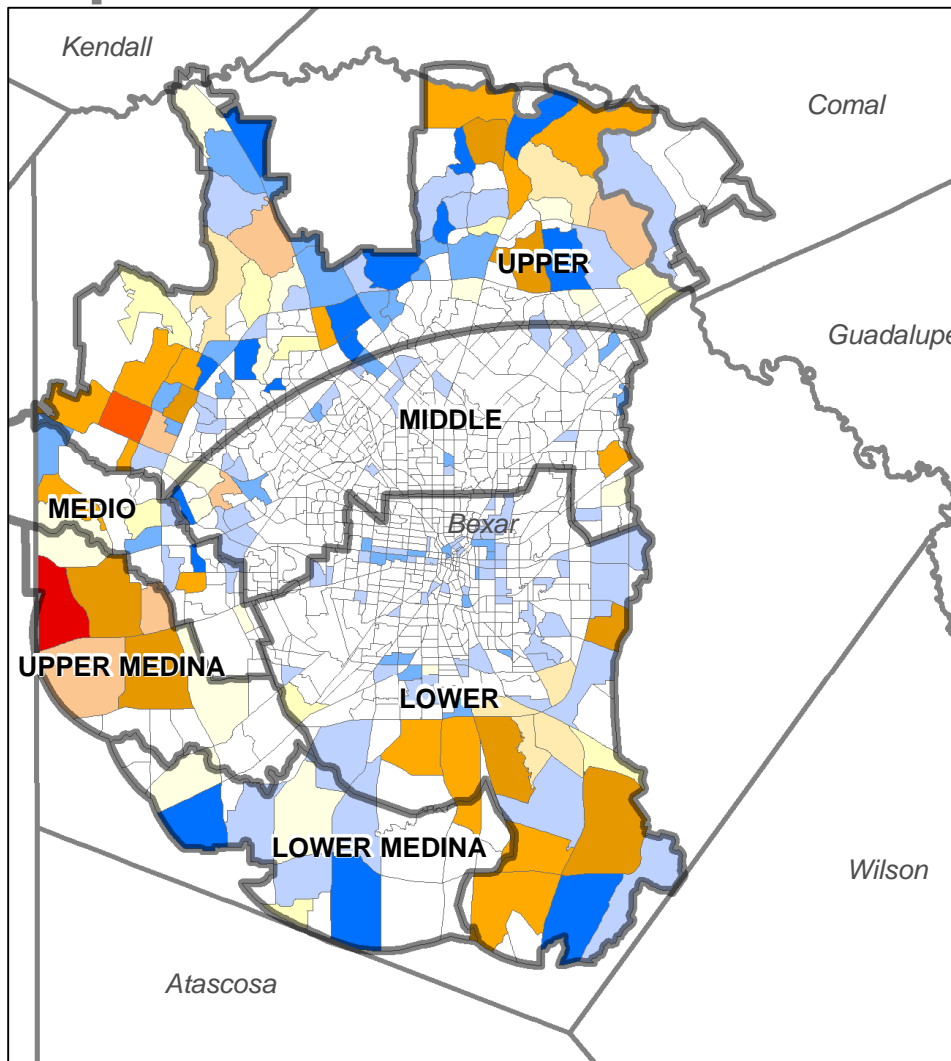


Legend
Change in Population 2019-2028
2014 TAZ Analysis

0.00 - 250
250 - 500
500 - 750
750 - 1,000
1,000 - 1,250
1,250 - 1,500
1,500 - 1,750
1,750 - 2,000
2,000 - 3,000
3,000 - 5,000
5,000 - 7,000
7,000 - 9,000

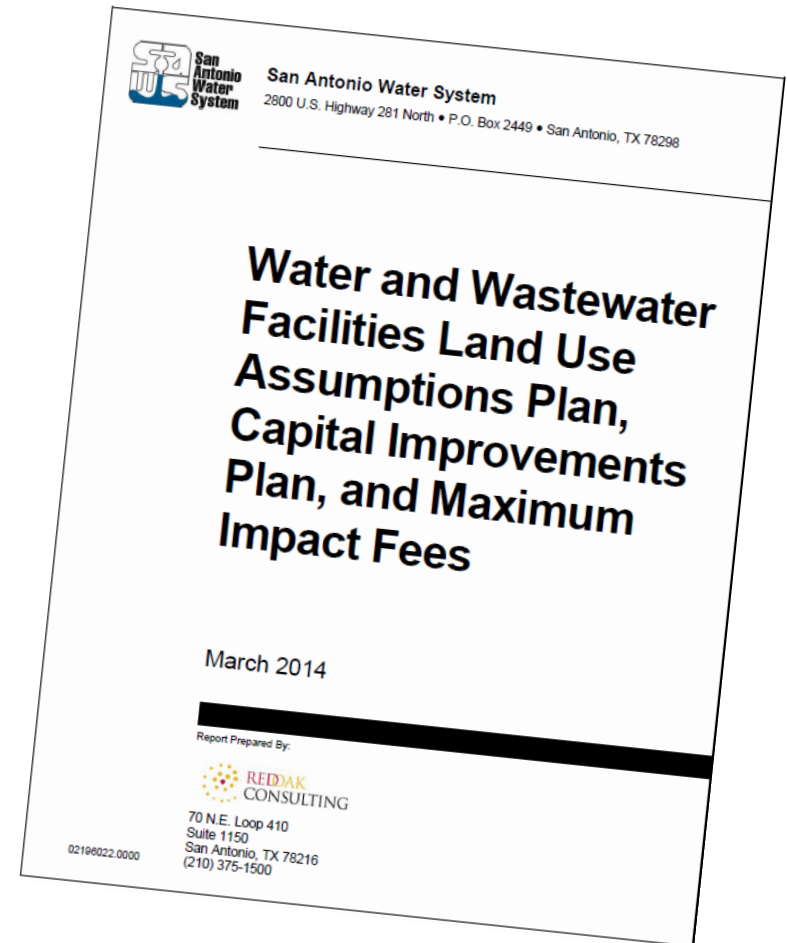
2019-2028 Change in Population, Wastewater Service Area

- Map shows the change in population from 2019 to 2028



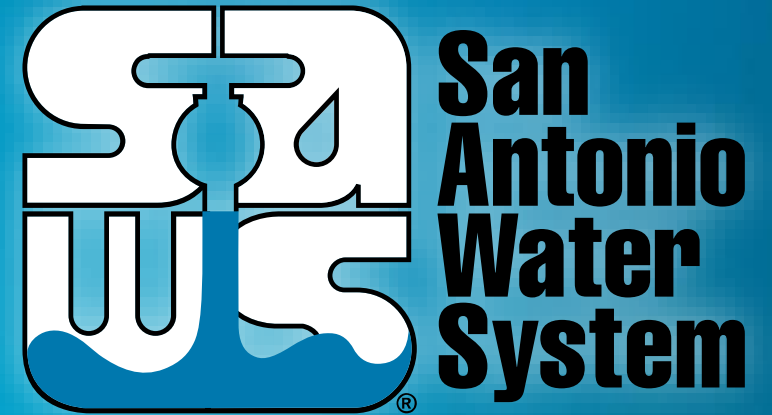
CIAC Findings

- CIAC Findings Included in 2014 Report
- Starts After Appendix E or Page 251 of pdf
- http://www.saws.org/business_center/developer/ImpactFees/docs/FinalReport%20May2014.pdf



CIAC Follow Up Information

Tracey B. Lehmann, P.E.
Director of Development



MAKING SAN ANTONIO
WATERFUL

Capital Improvements Advisory Committee
August 22, 2018